



Hillrom™

TS7500 Surgical Table Data Sheet





Hillrom™

TS7500 Surgical Table Data Sheet

OR TABLE COLUMNS

OR Table Column	Operating table column, fixed installation (SF, Hybrid SC)	Operating table column, floor setup installation (SB, Hybrid FC)	Operating table column, mobile (SM, Hybrid MC)
Material-No.	1717020/ 1730731 (U)	1717021/ 1730732 (U)	1717023/ 1730720 (U)
Rotation	360° freely rotatable (SF and SB), 350° rotatable (hybrid-columns)		
Height	490 mm – 1040 mm (19.3" – 40.9")	560 mm – 1070 mm (20.5" – 42.1")	510 mm – 1060 mm (20.1" – 41.7")
Height Range with Universal OR Tabletop H	592 mm – 1142 mm (23.3" – 45.0")	622 mm – 1172 mm (24.5" – 46.1")	612 mm – 1162 mm (24.1" – 45.5")
Height Adjustment Range	550 mm (21.7") speed: max. 27 mm/s (1.06 in/s) Lift: 400 mm (15.6 in), speed: max. 27 mm/s (1.06 in/s) Additional Lift: 150 mm (5.9 in), speed: max 4.27 mm/s (0.17 in/s)		
Column Cross-Section (L x W)	314 mm x 375 mm (12.4" x 14.8")		
Trendelenburg	± 45° (speed: max. 1.7°/s); up to 3°/s with SensorLine		
Tilt	± 30° (speed: max. 1.1°/s)		
Floor Plate Height	-		25 mm (1.0")
Zero Position	Automatic		



Hillrom™

TS7500 Surgical Table Data Sheet

OR TABLETOPS

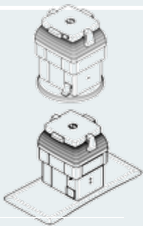
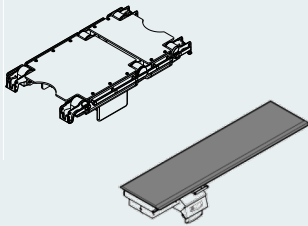
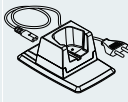
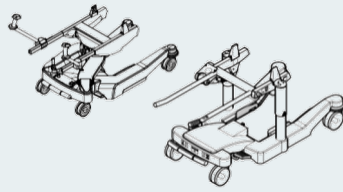
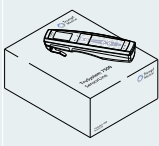
OR Tabletops	Universal Operating Tabletops			Special Operating Tabletops	
	U14 H	U24 H	U26 H	ST26 H	Carbon FloatLine
Material-No.	1909799 (V) 1909800 (U) 1947992 (J) 1909811 (W)	1909796 (V) 1909797 (U) 1947989 (J) 1909798 (W)	1909793 (V) 1909794 (U) 1947991 (J) 1909795 (W)	2029417 (V) 2029418 (U) 2029419 (J)	1616204 (V) 1616201 (U)
Length	832 mm (32.8")	1070 mm (42.1")	1070 mm (42.1")	1070 mm (42.1")	2290 mm (90.2")
Width Across Standard Rails	600 mm (23.6")				520 mm (20.5")
Adjustment Range, Leg Section Joint	+ 90° / - 105° (speed: max. 8.4°/s)				-
Adjustment Range, Upper Back Section Joint	-		+ 90° / - 105° (speed: max. 8.4°/s)		-
Adjustment Range, Lower Back Section Joint	+ 90° / - 105° (speed: max. 8.4°/s)	+ 90° / - 55° (speed: max. 8.4°/s)			-
Trendelenburg	-			± 20° (speed: max. 1°/s)	-
Longitudinal Slide	460 mm (18.1") speed: max. 26 mm/s (1.02 in/s)	400 mm (15.8") speed: max. 26 mm/s (1.02 in/s)			800 mm (31.5") speed: max. 30 mm/s (1.2 in/s)
Transverse Slide	-				±125 mm (4.9") speed: max. 30 mm/s (1.2 in/s)
Maximum Permissible Weight	400 kg (882 lbs)			360 kg (794 lbs)	225 kg (496 lbs)



Hillrom™

TS7500 Surgical Table Data Sheet

OVERVIEW TECHNICAL SPECIFICATIONS

Product	Product Description	Material-No.
	OR Table Column TS7500 SC ¹ /U OR Table Column TS7500 MC ² /U OR Table Column TS7500 FC ³ /U OR Table Column TS7500 Hybrid (FC) OR Table Column TS7500 Hybrid (MC) OR Table Column TS7500 Hybrid (SC) OR Table Column TS7500 Hybrid Plus (FC) OR Table Column TS7500 Hybrid Plus (SC)	1717020/1730731 1717023/1730720 1717021/1730732 1854085 1773204 1854086 1854087 1854088
	OR Tabletop U26 H V / U / J OR Tabletop U26 H V W OR Tabletop U24 H V / U / J OR Tabletop U24 H V W OR Tabletop U14 H V / U / J OR Tabletop U14 H V W OR Tabletop ST26 H V / U / J OR Tabletop Carbon FloatLine V / U	1909793/1909794/1947991 1909795 1909796/1909797/1947989 1909798 1909799/1909800/1947992 1909811 2029417/2029418/2029419 1616204/1616201
	Charging unit mobile AC TS7500 Charging unit mounted W / T AC TS7500 Charging unit mounted T DC TS7500	1557243 1451204 1537208
	Power Shuttle (H) Shuttle 3.7 360 Shuttle 2.7 360 Shuttle 3.6 360 Shuttle 2.6 360 Shuttle 1.6 360 Cleaning Shuttle 2.01	1774603 1459863 1459862 1489491 1418349 1418348 1536993
	TS7500 SensorLine Premium OR Table TS7500 SensorLine OR Table Remote control wireless TS7500 Cable remote control TS7500 (Hybrid, Hybrid Plus) Cable remote control TS7500 Cable remote control TS7500 (Hybrid, Hybrid Plus)	1997423 1947993 2003863 1633967 2003862 1633968

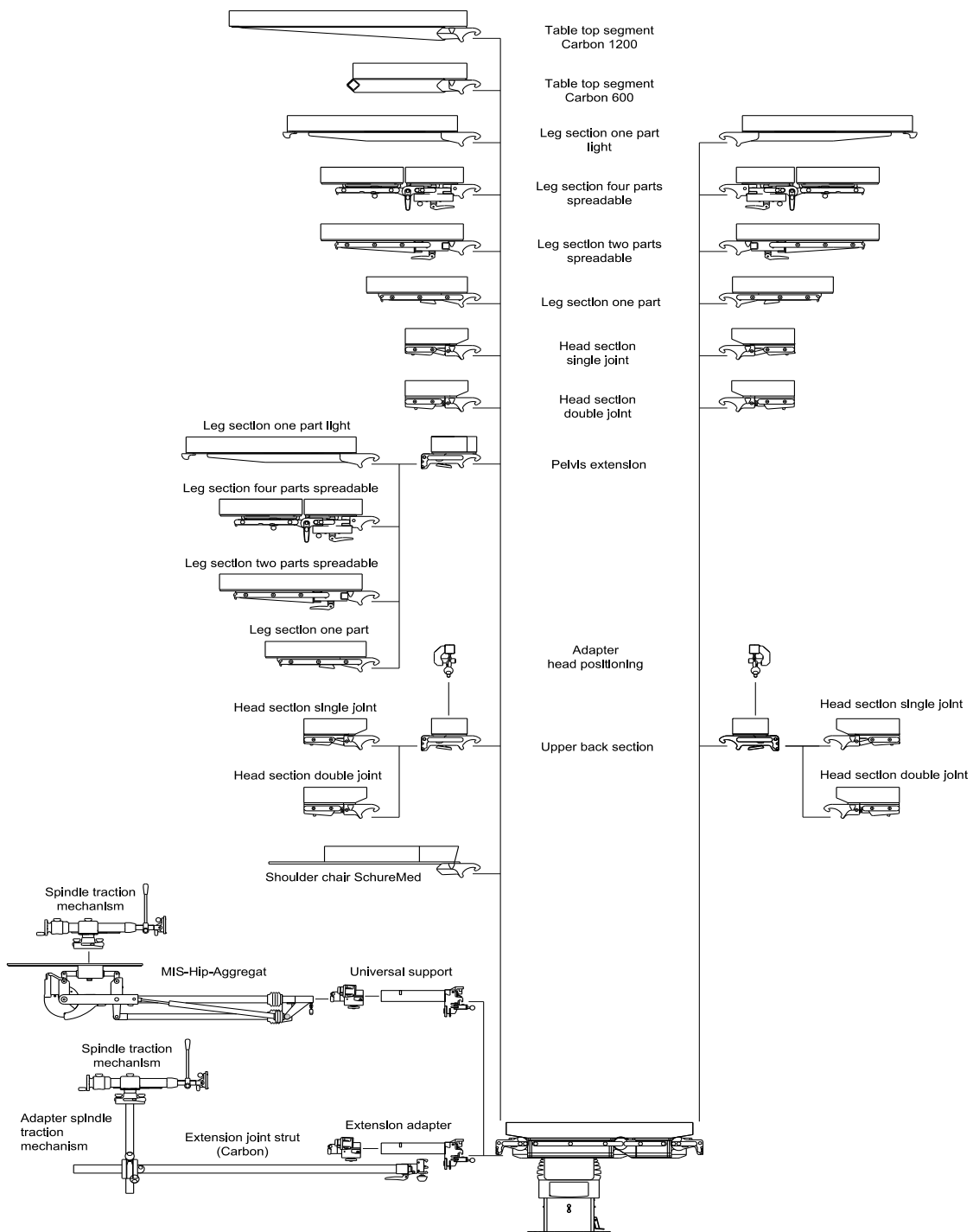
1. SC = stationary column
 2. MC = mobile column
 3. FC = Floor mounted column



Hillrom™

TS7500 Surgical Table Data Sheet

OVERVIEW COUPLING POINTS U26 H / U24 H / ST26 H

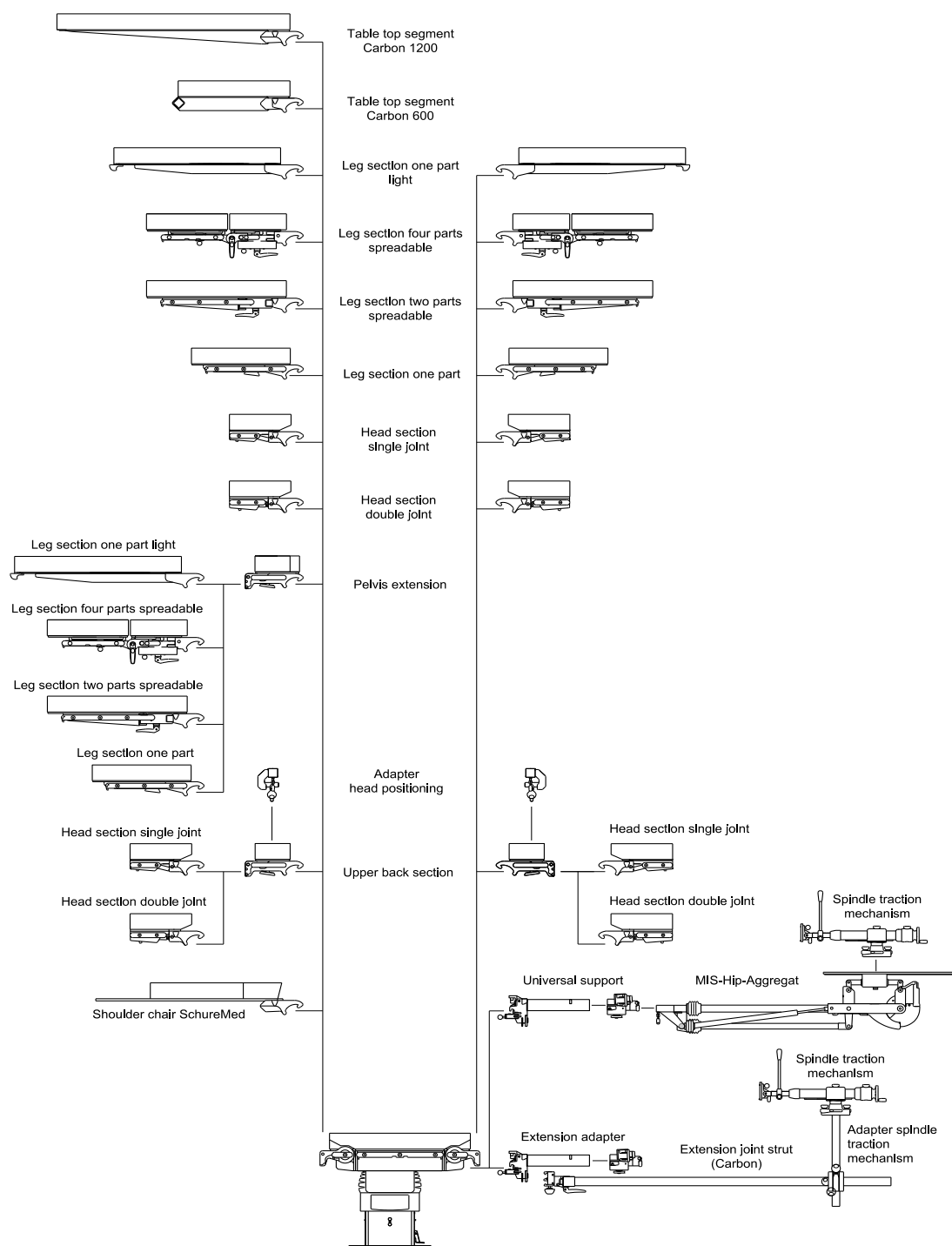




Hillrom™

TS7500 Surgical Table Data Sheet

OVERVIEW COUPLING POINTS U14 H











Hillrom™

TS7500 Surgical Table Data Sheet

OVERVIEW COUPLING POINTS HOOK AND FIXTURES

	Fixture		
	S	M	L
Coupling Point			
S Encoding 	X	X	X
M Encoding 		X	X
L Encoding 			X



Hillrom™

TS7500 Surgical Table Data Sheet

COMPATIBILITY

Material – No.	Name	U14 H		U24 H / U26 H		ST26 H		Carbon FloatLine	
		HS	FS	HS	FS	HS	FS	HS	FS
1850955	Head section double joint H V	X	X	X	X	X	X		
1853828	Head section double joint H U V	X	X	X	X	X	X		
1850957	Head section double joint H J V	X	X	X	X	X	X		
1850951	Head section single joint H V	X	X	X	X	X	X		
1769761	Head section single joint H U V	X	X	X	X	X	X		
1850953	Head section single joint H J V	X	X	X	X	X	X		
1909812	Upper back section H V	X	X	X	X	X	X		
1909813	Upper back section H V U	X	X	X	X	X	X		
1951368	Upper back section H V J	X	X	X	X	X	X		
1739992	Tabletop segment Carbon 600 H V	X	X	X	X	X	X		
1850989	Tabletop segment Carbon 1200 H V	X	X	X	X	X	X		
1909817	Pelvic extension H V	X	X		X		X		
1951369	Pelvic extension H V J	X	X		X		X		
1909820	Pelvic extension H V U	X	X		X		X		
2003449	Swivel segment H V	X	X	X	X	X	X		
1850959	Leg section one part H V	X	X	X	X	X	X		
1739969	Leg section one part H U V	X	X	X	X	X	X		
1850971	Leg section one part H J V	X	X	X	X	X	X		
1850979	Leg section two parts spreadable H V	X	X	X	X	X	X		
1739991	Leg section two parts spreadable H U V	X	X	X	X	X	X		
1850981	Leg section two parts spreadable H J V	X	X	X	X	X	X		
1739993	Leg section one part light H V	X	X	X	X	X	X		



Hillrom™

TS7500 Surgical Table Data Sheet

COMPATIBILITY

Material – No.	Name	U14 H		U24 H / U26 H		ST26 H		Carbon FloatLine	
		HS	FS	HS	FS	HS	FS	HS	FS
1697677/ 1697678	Shoulder support short S/ V								
1549783/ 1549785/ 1549786/ 1549787	Pelvis extension COMFORT/ T/ U/ UT								
1790063/ 1790064/ 1790065	Pelvis extension S/ V/ UV								
1790066/ 1790087/ 1790088	Pelvis extension long S/ V/ UV								
1790025/ 1790026	Tabletop segment Carbon 450 V/ UV								
1790090/ 1790091/ 1790092	Leg section one part short S/ V/ UV								
1790113/ 1790114	Swivel segment S/ V								
1790093/ 1790094/ 1790095/ 1851975	Leg section two parts short S/ V/ UV/ B								
1790097/ 1790098/ 1790099/ 1851976	Leg section two parts S/ V/ UV/ B								
1790100/ 1790111/ 1790112	Leg section two parts spread joint S/ V/ UV								
1790118	Leg section X-RAY V								
1790119	Leg section X-RAY two parts spread joint V								
1790121	Leg section one part light weight V								
1412708	LegMaster								
1790123/ 1790124	Ophthalmology adapter S/ V								
1567641/ 1567643	Universal support motorized/ T								
1361398/ 1388609	Spinal cord positioning device/ U								
1574666	Extension-adapter	X			X		X		

HS – Head side

FS – Foot side

Please use the same type of pad or side rail.



Hillrom™

TS7500 Surgical Table Data Sheet

VALID STATUTORY AND ENGINEER STANDARDS

EN 60 601-1	Medical electrical equipment, general requirements for safety
EN 60 601-1-2	EMV, class A
EN 60 601-2-46	Special requirements for operating table safety
93/42/EEC Appendix IX	Class I medical device
MDD Appendix I	Meets basic requirements
MDD Appendix VII	Perform conformity assessment procedure (CE)

ELECTRICAL PARAMETER

External Power Supply	100-230 V~, 50-60 Hz 240 V~, 50 Hz
Internal Power Supply	I.P.S., 2 batteries, 40.7 V each 4.7 Ah (SM) I.P.S., 1 battery, 40.7 V each 4.7 Ah (SF)
Operating Time with Fully Charged Accumulator (Mobile Column)	1 day (assumption: 10 surgeries / day)
Charge Time	3 h
Operating Mode	Continuous operation with intermittent loading (2 min on, 8 min off)
Class of Protection	Class I, device with internal power supply, I.P.S.
Power Consumption	Max. 700 VA
Level of Protection Against Electrical Shock	Type B application part; patient leakage current against electrical shock according to CF as per EN 60601-1
Level of Protection Against Water Penetration	IP X4
Level of Protection When Using Flammable Mixtures in the Area	With battery operation class AP
Heat Emission	Max. 540 kJ/h / min 44 kJ/h



Hillrom™

TS7500 Surgical Table Data Sheet

ELECTRICAL INTERFACES

Connector Socket for the Control Units	On both sides, on column head
Connector Socket for the Mains Cable	Only mobile operating table column
Service connector	At column head (USB, Ethernet)
Ethernet	At column head; OR table column SF NET: cable is fixed

CONDITIONS FOR OPERATION, STORAGE, TRANSPORT

Temperature Range for Operation	+ 10°C to + 40°C 50 °F to 104 °F
Temperature Range for Storage and Transport	- 20°C to + 70°C - 4°F to 158 °F
Air Humidity for Operations	20% to 80%
Air Humidity for Storage and Transport	5% to 95%
Atmospheric Pressure	min. 700 mbar to 1060 mbar

REMOTE CONTROL

Dimensions Including Clip (L x W x H)	Approx. 230 mm x 70 mm x 55 mm (9.06" x 2.76" x 2.17")
Weight	Approx. 325 g (0.72 lbs)
Display	240 x 320 pixels, color
Power Supply	Integrated 3.6 V lithium ion battery (rechargeable with the charger provided)
IR Channel / Wireless Frequency Range	36 kHz / ISM-Band 2.4 GHz
Operating Time with Fully Charged Accumulator	During use: 10 h Standby: 5 days Active transport lock: 6 months
Charge Time	2.5 h



Hillrom™

TS7500 Surgical Table Data Sheet

OPERATIONS

Operation	Cable remote control, wireless remote control, column control, foot switch
Range of Wireless Remote Control	Within operating theatre
Remote Control Function Keys	Up to 27 functions; in addition to zero position, OFF
Main Menu Remote Display	Status bar; provides current position of OR-table; submenus "menu" and "position"
Functions Submenu "Menu"	Flex, reflex, operation, speed, patient direction, service
Functions Submenu Service	Language selection / operating table selection / shipping lock / recent messages / display HW/SW-status / network address / delete entire position memory / temporary slow traverse / system (secured)
Functions Submenu "Patient Direction"	Changing of the logical patient direction, select "normal" or "invers"
Functions Submenu "Speed"	Speed function allows you to adjust all electrical adjustments with lower speed (25%, 50%, 75%, 100%)
Functions Submenu Position	Store and recall operating table positions (4 fast storages, 30 overall)
Functions Submenu Flex / Reflex	Recall flex or reflex position
Column Control Functions	Up to 19 functions; in addition to zero position, ON/OFF
Indicators of Remote Control	Battery state of remote control (wireless remote control only) / patient direction / zero position / brakes (for fixed installations only) / wireless signal (wireless remote control only)
Indicators of Column Control	Ready for use / emergency operation / head position left/right / malfunction / battery state / battery charging / external power supply / brakes (fixed installations only) / zero position
Foot Control	3 functions (combinations of height, Tilt, angle, leg section, back section are possible)
Priority Controls	1st column control / 2nd cable remote control / 3rd foot switch / 4th wireless remote control



Hillrom™

TS7500 Surgical Table Data Sheet

CHARGING UNIT FOR REMOTE CONTROL

Dimensions Including Clip (L x W x H)	Approx. 175 mm x 115 mm x 80 mm (6.9" x 4.5" x 3.2") (charging unit mobile) Approx. 90 mm x 95 mm x 75 mm (3.5" x 3.7" x 3.0") (charging units mounted)
Weight	Approx. 550 g (1.2 lbs) (charging unit mobile) Approx. 500 g (1.1 lbs) (charging units mounted)
Operating Voltage	100...230 V / 24 V
Charging Voltage	5 V DC
Frequency	50/60 Hz
Charging Current	max. 1 A
Maximum Power Consumption	110 mA / 530 mA

ACOUSTIC SIGNALS

Turning on the Operating Table	Series of ascending tones
Turning off the Operating Table	Series of descending tones
The Final Position of the Selected Adjustment Range is Reached, Zero Pass-Through	Single tone
Confirmation of an Action, e.g. Reaching the Zero Position, Finished Transfer	Double tone
Column Batteries Require Recharging	Series of 2 pulsating tones, repeating periodically (at an interval of every few minutes)
Warning or Error	Three high-pitched tones



Hillrom™

TS7500 Surgical Table Data Sheet

DIMENSIONS OPERATING TABLETOP AND OPERATING TABLE COLUMN

Height Adjustment OR Table Column incl. OR Tabletop	592 mm – 1142 mm (23.3" – 45.0") (SC with U14 H V / U24 H V / U26 H V) 612 mm – 1162 mm (24.1" – 45.8") (MC with U14 H V / U24 H V / U26 H V) 622 mm – 1172 mm (24.5" – 46.1") (FC with U14 H V / U24 H V / U26 H V) 666 mm – 1216 mm (26.2" – 47.9") (MC with ST26 H) 686 mm – 1236 mm (27.0" – 48.7") (SC with ST26 H) 696 mm – 1246 mm (27.4" – 49.1") (FC with ST26 H) 699 mm – 1249 mm (27.5" – 49.2") (MC with Carbon FloatLine) 679 mm – 1229 mm (26.7" – 48.4") (SC with Carbon FloatLine) 709 mm – 1259 mm (27.9" – 49.6") (FC with Carbon FloatLine)
Column Cross Section (L x W)	310 mm x 375 mm (12.4" x 14.8")
Dimensions Base Plate	900 mm x 408 mm x 25 mm (35.4" x 16.1" x 1.0") (MC) Ø 430 mm (16.9"), height 37 mm (1.5") (FC) Ø 500 mm (19.7") (SC)
Dimensions OR Tabletop without Pads (L x W x H)	832 mm x 600 mm x 102 mm (32.8" x 23.6" x 4.0") (U14 H V) 1070 mm x 600 mm x 102 mm (42.1" x 23.6" x 4.0") (U24 H V) 1070 mm x 600 mm x 102 mm (42.1" x 23.6" x 4.0") (U26 H V) 1004 mm x 601 mm x 176 mm (39.5" x 23.6" x 6.9") (ST26 H) 2290 mm x 520 mm x 189 mm (90.2" x 20.5" x 7.4") (Carbon FloatLine)
Height of Pads	Balanced pad: 90 mm (3.5") Comfort Plus pad: 50 mm (2.0")
Width of Pads	545 mm (U14 H V / U24 H V / U26 H V / ST26 H); 520 mm (Carbon FloatLine)
Dimensions Side Rails	25 mm x 10 mm (1.0" x 0.4") (EU) 28.6 mm x 9.5 mm (1.1" x 0.4") (US) 32 mm x 10 mm (1.3" x 0.4") (J)



Hillrom™

TS7500 Surgical Table Data Sheet

MAX. ADJUSTMENT RANGE AT COMBINATION TRENDLENBURG / TILT

Tabletop U14 H, U24 H, U26 H		Tabletop ST26 H	
Trendelenburg 45°	No Tilt possible	Trendelenburg 65°	No Tilt possible
Trendelenburg 40°	Tilt 10° possible	Trendelenburg 60°	Tilt 10° possible
Trendelenburg 15°	Tilt 20° possible	Trendelenburg 35°	Tilt 20° possible
Trendelenburg 0°	Tilt 30° possible	Trendelenburg 20°	Tilt 30° possible

COUPLING POINTS OPERATING TABLETOP

Tabletop	Head End	Foot End
U14 H V	Hook coupling point with fixture M (motorized joint)	Hook coupling point with fixture L (motorized joint)
U24 H V	Hook coupling point with fixture M (manual joint)	Hook coupling point with fixture L (motorized joint)
U26 H V	Hook coupling point with fixture M (motorized joint)	Hook coupling point with fixture L (motorized joint)
ST26 H	Hook coupling point with fixture M (motorized joint)	Hook coupling point with fixture L (motorized joint)
Carbon FloatLine	Coupling point Carbon 40x40	No coupling point

ADJUSTMENT SHUTTLE

Lift	230 mm (9.1") (3.6/3.7) 210 mm (8.3") (Power Shuttle (H)); via pump pedal
Trendelenburg / Reverse-Trendelenburg	15° via quick adjustment (2.7/3.7); via Kurbel (2.6/3.6)
Straight Line / 5th Wheel	Via pedal



Hillrom™

TS7500 Surgical Table Data Sheet

DIMENSIONS SHUTTLE

Length x Width x Height	1520 mm x 750 mm x 780 mm (59.8" x 29.5" x 30.7") Power Shuttle (H): 1552 mm x 750 mm x 760 mm (59.9" x 29.5" x 29.9")
Wheel Type	4 visible dual-swivel wheels (easy to clean)
Wheel Diameter	Ø 150 mm (5.9")
5th Wheel Diameter	Ø 100 mm (3.9")

USED MATERIALS

Tabletop Frame, Column Paneling, Coupling Points, Standard Rails, Running Gear	Stainless steel (1.4301); resistant to disinfectant agents, easy to clean
Balanced Pad	Viscous elastic pad with dual foam construction, viscous elastic part: 20 mm (0.8"), High Resilience-foam part: 70 mm (2.8"), electrically conductive, soft and removable
Standard "PU" Pad	Polyurethane foam core; electrically conductive, soft and removable
Shuttle	Aluminum AlMgSi1, powder coating, matt paint



Hillrom™

TS7500 Surgical Table Data Sheet

NET WEIGHT / LOADS

Net Weight OR Table Column	150 kg (331 lbs) (SF, Hybrid SC) 170 kg (375 lbs) (SM, Hybrid MC) 140 kg (309 lbs) (SB, Hybrid FC)
Net Weight OR Tabletop	79 kg (174 lbs) (U14 H V) 85 kg (187 lbs) (U24 H V) 92 kg (203 lbs) (U26 H V) 120 kg (264 lbs) (ST26 H)
Net Weight Shuttle	72 kg (159 lbs) (1.6 360) 79 kg (174 lbs) (2.6/2.7 360) 89 kg (196 lbs) (3.6/3.7 360) 125 kg (276 lbs) (Power Shuttle (H))
Maximum Load Side Rails	100 Nm
Maximum Load Capacity	400 kg (882 lbs) (depends on used operating tabletop)
Bearing Pressure TS7500 SM (Hybrid MC)	1.2 N/mm ² (174.05 psi); max. total load: 7000 N per 0.01 m ²
Bearing Pressure TS7500 SF/ SB (Hybrid SC/FC)	0.18 N/mm ² (26.11 psi); max. total load: 7000 N per 0.04 m ²
Bearing Pressure Shuttle	approx. 7 N/mm ² (1015.26 psi)

CLEANING / DISINFECTION

Permitted Cleaning Agents for Stainless Steel	All commercially available stainless-steel cleaning agents
Permitted Cleaning Agents for Plastic Parts / Pads	All mildly alkaline all-purpose cleaning agents (active cleaning ingredients: tensides and phosphates)
Cleaning and Disinfection Agents That are Not Permitted	Do not use any abrasive and corrosive agents containing halogens and peracetic acid and no cleaning and disinfection agents containing alcohol on plastic pieces or pads



Hillrom™

TS7500 Surgical Table Data Sheet

CLEANING IN WASHING MACHINE

Conditions	Disinfectant to be used: 4500 neodisher Dekonta manufactured by Weigert; rinsing agent: 4307 neodisher BP manufactured by Weigert; total wash time: approx. 8 min
Wash Cycle (Temperature / Water Pressure / Concentration of Disinfection Agent / Duration / Dripping Break)	Max. 65 °C (149 °F) / approx. 1.5 bar / 0.65 % / approx. 180 s / approx. 90 s
Rinse Cycle (Temperature / Concentration of Rinse Agent / Duration / Dripping Break)	Max. 80 °C (176 °F) / 0.1 % / approx. 120 s / approx. 60 s
Hot Air-Drying Cycle (Temperature / Duration)	Max. 80 °C (176 °F) / approx. 300 s
Cooling Cycle (Duration)	Approx. 120 s

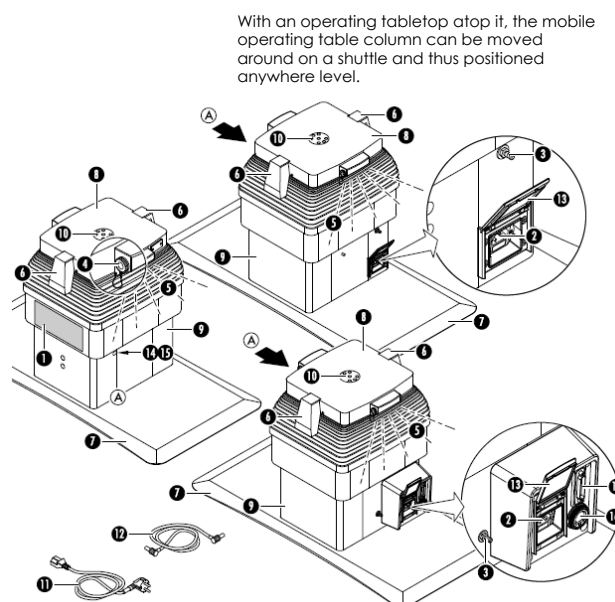


Hillrom™

TS7500 Surgical Table Data Sheet

OVERVIEW OPERATING TABLE COLUMN

Mobile Operating Table Column	
1	Column Keypad
2	Connector Socket for the Mains Cable
3	Connecting Pin for Equipotential Bonding Conductor
4	Connector Socket for the Control Unit (on both sides on the top of the column)
5	Endolight
6	Holding Wedge for Operating Tabletop
7	Floor Plate
8	Column Head
9	Lowest Column Cover (column base)
10	Electrical Contact Plate for Operating Tabletop
11	Mains Power Cable
12	Equipotential Bonding Conductor
13	Cover
14	Reset Button
15	Cap
16	Ethernet Connection Socket
17	Connector Socket for Hardware Signals





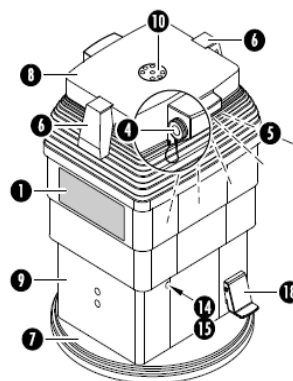
Hillrom™

TS7500 Surgical Table Data Sheet

OVERVIEW OPERATING TABLE COLUMN

Fixed Operating Table Column Installation	
1	Column Keypad
4	Connector Socket for the Control Unit (on both sides on the top of the column)
5	Endolight
6	Holding Wedge for Operating Tabletop
7	Floor Plate
8	Column Head
9	Lowest Column Cover (column base)
10	Electrical Contact Plate for Operating Tabletop
14	Reset Button
15	Cap
18	Brake Pedal

The operating table column is permanently installed in the operating room and can be rotated smoothly and continuously.





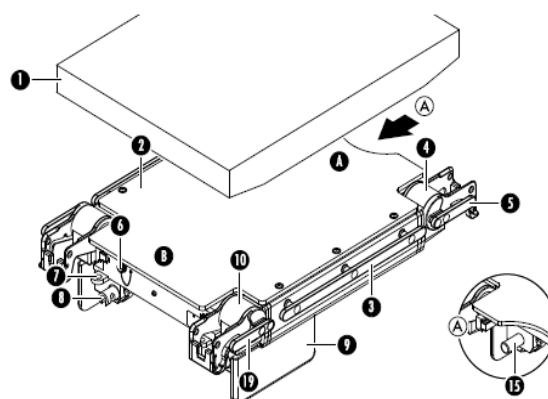
Hillrom™

TS7500 Surgical Table Data Sheet

OVERVIEW OPERATING TABLETOP U14 H V

1	Pads
2	Seat Section
3	Side Rails for Seat Section
4	Motorized Leg Section Joint With Fixture L
5	Side Rails for Leg Section Joint
6	Socket for Electrical Accessories (e.g. Section operating unit) and the Connection to an External Service Tool for Maintenance and Repair
7	Insertion Opening for Extension Adapter
8	Bayonet Base for Extension Adapter
9	Wedge Fixture
10	Lower Back Section Joint
A	Foot Enjoint Motorized with Attachment M
15	Crash Protection
17	Side Rail of Lower Back Section of the Operating Tabletop
B	Head End of the Operating Tabletop

The operating tabletop U14 H V U is a one-part operating tabletop with two motorized joint pairs (leg and lower back section) and motorized longitudinal travel.





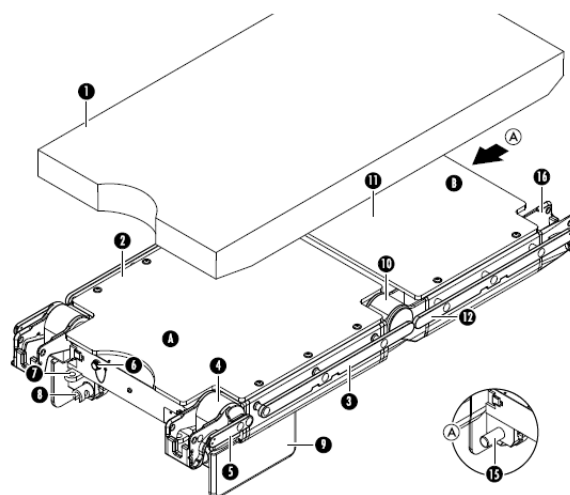
Hillrom™

TS7500 Surgical Table Data Sheet

OVERVIEW OPERATING TABLETOP U24 H V

1	Pads
2	Seat Section
3	Side Rails for Seat Section
4	Motorized Leg Section Joint With Fixture L
5	Side Rails for Leg Section Joint
6	Socket for Electrical Accessories (e.g. Section operating unit) and the Connection to an External Service Tool for Maintenance and Repair
7	Insertion Opening for Extension Adapter
8	Bayonet Base for Extension Adapter
9	Wedge Fixture
10	Lower Back Section Joint Motorized
11	Lower Back Section
12	Side Rail of Lower Back Section
A	Foot End of the Operating Tabletop
15	Crash Protection
16	Attachment M
B	Head End of the Operating Tabletop

The operating tabletop U24 H V U is a two-part operating tabletop with two motorized joint pairs (leg- and back section) and motorized longitudinal travel.





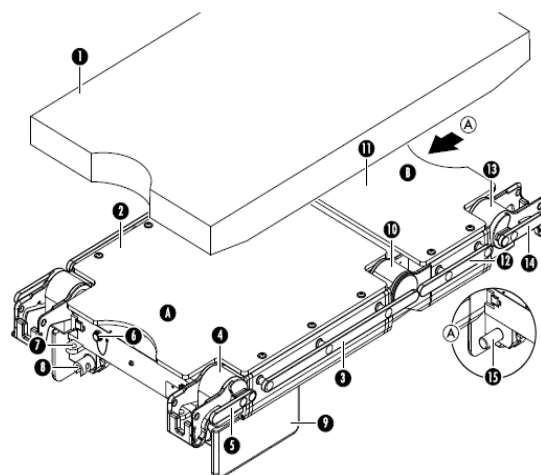
Hillrom™

TS7500 Surgical Table Data Sheet

OVERVIEW OPERATING TABLETOP U26 H V

1	Pads
2	Seat Section
3	Side Rails for Seat Section
4	Motorized Leg Section Joint With Fixture L
5	Side Rails for Leg Section Joint
6	Socket for Electrical Accessories (e.g. Section operating unit) and the Connection to an External Service Tool for Maintenance and Repair
7	Insertion Opening for Extension Adapter
8	Bayonet Base for Extension Adapter
9	Wedge Fixture
10	Lower Back Section Joint Motorized
11	Lower Back Section
12	Side Rail of Lower Back Section
A	Foot End of the Operating Tabletop
15	Crash Protection
B	Head End of the Operating Tabletop

The operating tabletop U26 H V U is a two-part operating tabletop with three motorized joint pairs (leg section, lower and upper back section) and motorized longitudinal travel.





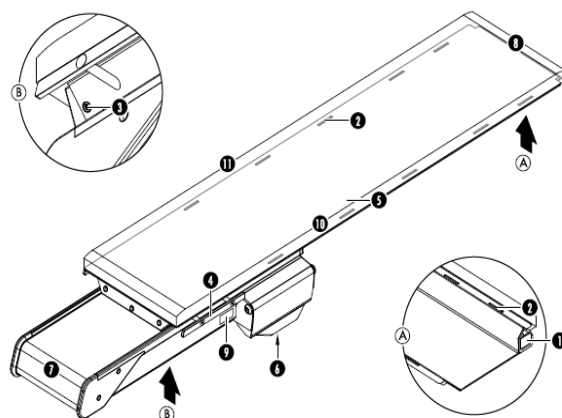
Hillrom™

TS7500 Surgical Table Data Sheet

OVERVIEW OPERATING TABLETOP CARBON FLOATLINE

1	Carbon Coupling Point 40 x 40
2	Slit for Belt Attachment
3	Connector Socket (both sides of the tabletop) for the Sensor Control FloatLine Cable Control Unit
4	Standard Rail
5	Carbon Plate
6	Wedge Socket (below the cover plate)
7	Foot End of the Tabletop
8	Head End of the Tabletop
9	Rating Plate
10	Left Side of the Tabletop
11	Right Side of the Tabletop
A	Foot End of the Operating Tabletop
B	Head End of the Operating Tabletop

The operating tabletop Carbon FloatLine is an electromechanically adjustable, one-piece interchangeable tabletop for TS7500 operating table system. The patient-supporting surface system of the operating tabletop is made of carbon fiber.





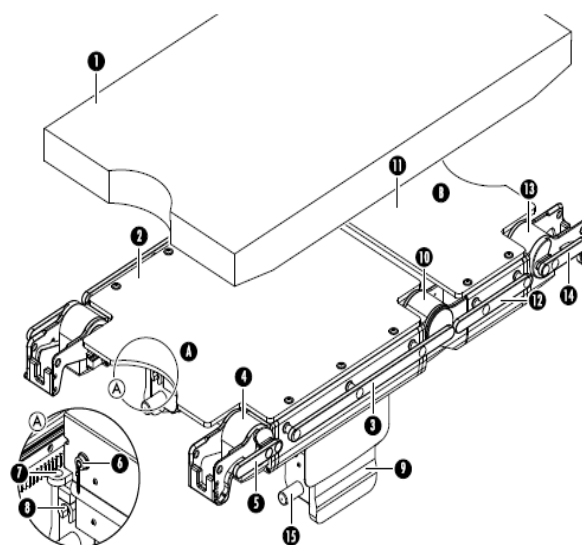
Hillrom™

TS7500 Surgical Table Data Sheet

OVERVIEW OPERATING TABLETOP ST26 H

1	Pads
2	Seat Section
3	Side Rails for Seat Section
4	Motorized Leg Section Joint With Fixture L
5	Side Rails for Leg Section Joint
6	Socket for Electrical Accessories (e.g. Section operating unit) and the Connection to an External Service Tool for Maintenance and Repair
7	Insertion Opening for Extension Adapter
8	Bayonet Base for Extension Adapter
9	Wedge Fixture
10	Lower Back Section Joint Motorized
11	Lower Back Section
12	Side Rail of Lower Back Section
13	Upper Back Section Joint Motorized with Attachment M
A	Foot End of the Operating Tabletop
15	Crash Protection
B	Head End of the Operating Tabletop

The operating tabletop ST26 U V H is a two-part operating tabletop with three motorized joint pairs (leg section, lower and upper back section), motorized longitudinal travel, and (reverse) Trendelenburg adjustment).



For more information please contact your local Hillrom representative.

hillrom.com

Amerika Building (7th Floor)
Hoogoorddreef 15
1101 BA Amsterdam, The Netherlands

TS7500 naming corresponds to the following CE registered products: TS 7500 - 4091000

The TS7500 is intended to be used by clinicians and medically qualified personnel. This medical device is a regulated healthcare product which, pursuant to such regulation bears a CE mark. Hill-Rom recommends that you carefully read the detailed instructions for safe and proper use included in the documents accompanying the medical devices. The personnel of healthcare establishments are responsible for the proper use and maintenance of these medical devices. Hill-Rom reserves the right to make changes without notice in design, specifications and models. The only warranty Hill-Rom makes is the express written warranty extended on the sale or rental of its products. TRUMPF Medizin Systeme GmbH + Co. KG is a subsidiary of Hill-Rom Holdings, Inc.