



# PST 500 PRECISION SURGICAL TABLE

The Foundation of Care



**Hillrom™**



# Hillrom™

---

Our innovations put more heart in healthcare. Through more intelligent—and more connected—solutions, we help simplify routine workflows and communication, enabling care teams to focus on their passion—helping patients get better sooner. And we continuously raise the bar on quality and safety, building upon our legacy of trust with providers around the world.

## **Hillrom. Advancing Connected Care.**



**Hillrom™**



In dynamic surgical environments, care teams expect versatile technologies and tools.

- Improve efficiency in the OR
- Maximize surgical capabilities
- Enhancing patient and caregiver safety in the OR



Hillrom™

# PST 500 Precision Surgical Table – The Foundation of Care



## Versatile

Helping you stretch your investment and expand your procedural capabilities.



## Safe

Designed with the safety of the patient and user in mind.



## Efficient

Helping you streamline your workflow and see more patients, faster.



## Intuitive

Quick to set up and easy to use features and components.

# Key Features

## Versatile Tabletop

With its wide articulation ranges, the correct position is always within reach.

## Imaging Support

With nearly 40 cm of table top slide, C-arm access is simple – and carbon fiber components enable 360° imaging.

## Normal / Reverse Orientation

Allows the head section to attach to the foot side and vice versa.

## Collision Control

Avoid collisions – and the risks that come with them.

## Quick Setup

The table's lightweight components and self-aligning hook-coupling point system make setup and modifications quick and easy.

## High Patient Weight Capacity

Supporting up to 454 kg, the table can accommodate a variety of patients.

## Innovative Light Messaging System

Color-coded LED lights communicate table statuses such as brake setting, battery level and error state, reducing alarm fatigue in your clinical staff.

## Easy to Move

Dual castors and standard 5<sup>th</sup> wheel help you move the table where you need it.



**Hillrom™**

# Trend/Tilt Capability

## EXPANDED ACCESS AND PROCEDURAL CAPABILITIES WITH A SINGLE TABLE

- 35° Trend
- 25° Tilt
- 30° / 25° Trend/Tilt ratio
- Expanded access for colorectal, bariatric and laparoscopic surgeries



# Normal / Reverse Orientation

## VERSATILITY FOR PATIENT POSITIONING AND SURGICAL ACCESS, OPTIMIZING WORKFLOW

- Added versatility for patient positioning
- Supports industry standard workflow by allowing the head section to attach to the foot side





# 454 kg Patient Weight Capacity

ACCOMMODATE A WIDE RANGE OF PATIENTS GIVING YOU PEACE OF MIND

- Up to 360 kg without restriction in normal orientation\*



Hillrom™

\* Depending on table top configuration

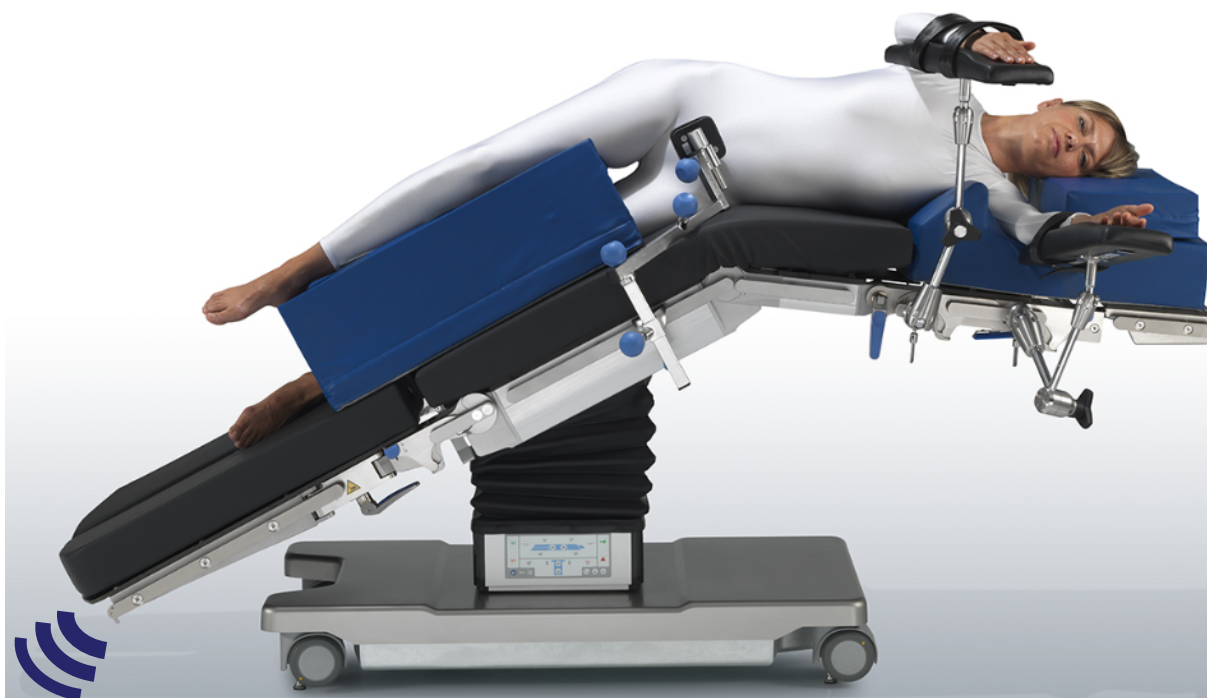
APR187401-EN-EMEA-R1 01 Feb 2021 © 2021 Hill-Rom Services, Inc. ALL RIGHTS RESERVED.



# Collision Control

## PREVENT THE TABLE FROM IMPACTING THE FLOOR RISKING A PATIENT INJURY

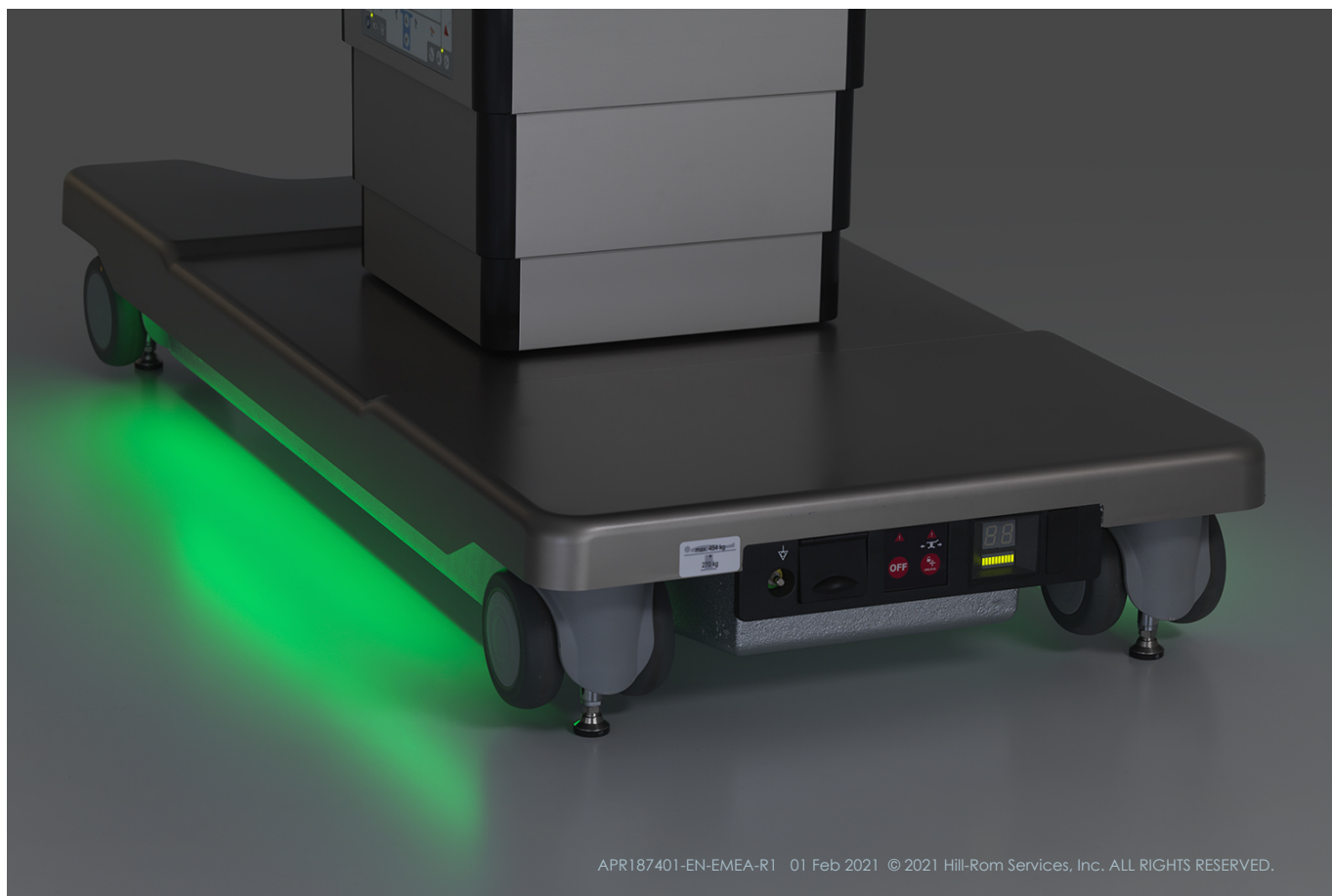
- Applicable for normal and reverse orientation
- Safe patient and table articulation while draped with limited visibility



# Light Messaging System

## VISUAL TABLE STATUS FEEDBACK REDUCING ALARM FATIGUE

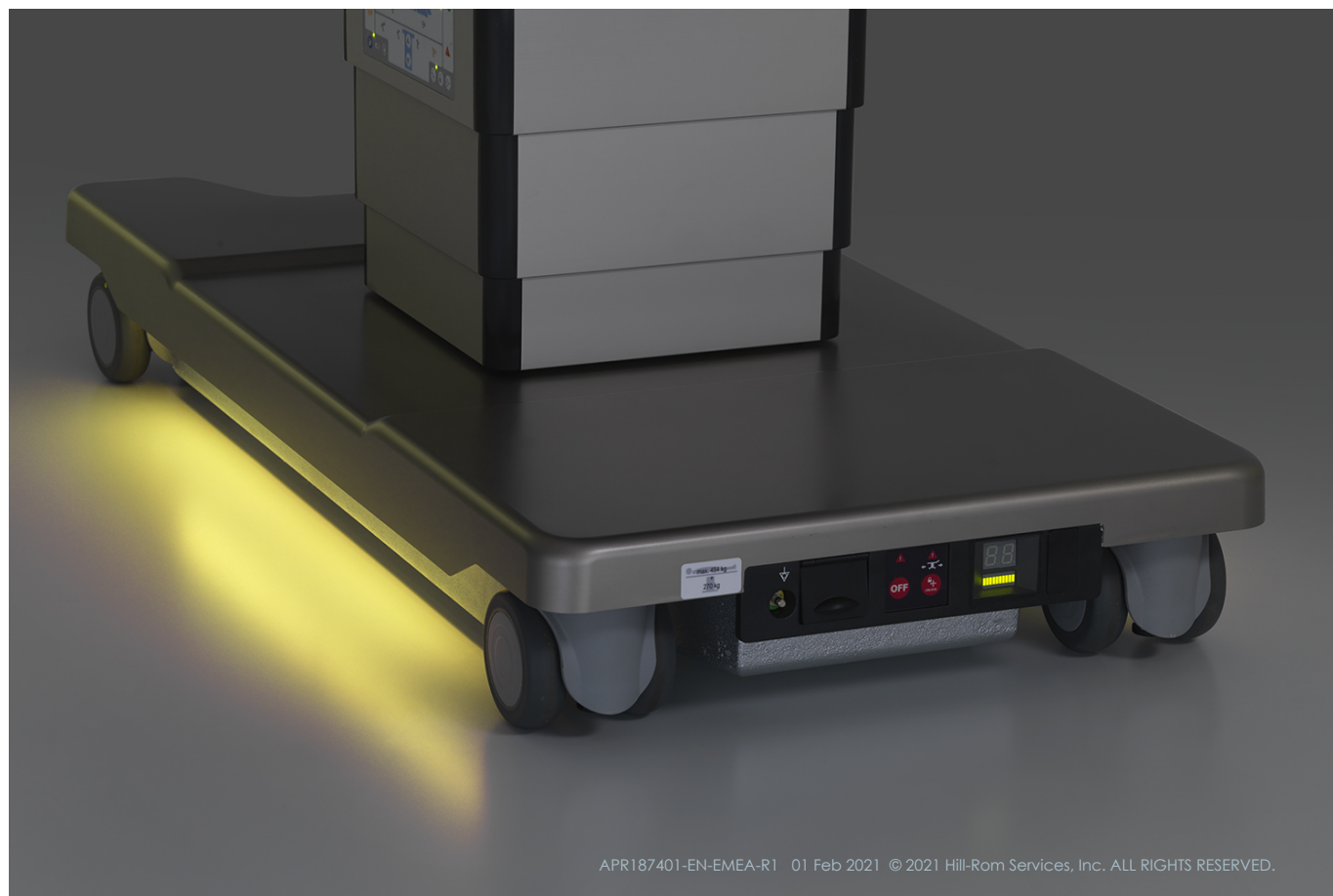
- Table Lock Status



# Light Messaging System

## VISUAL TABLE STATUS FEEDBACK REDUCING ALARM FATIGUE

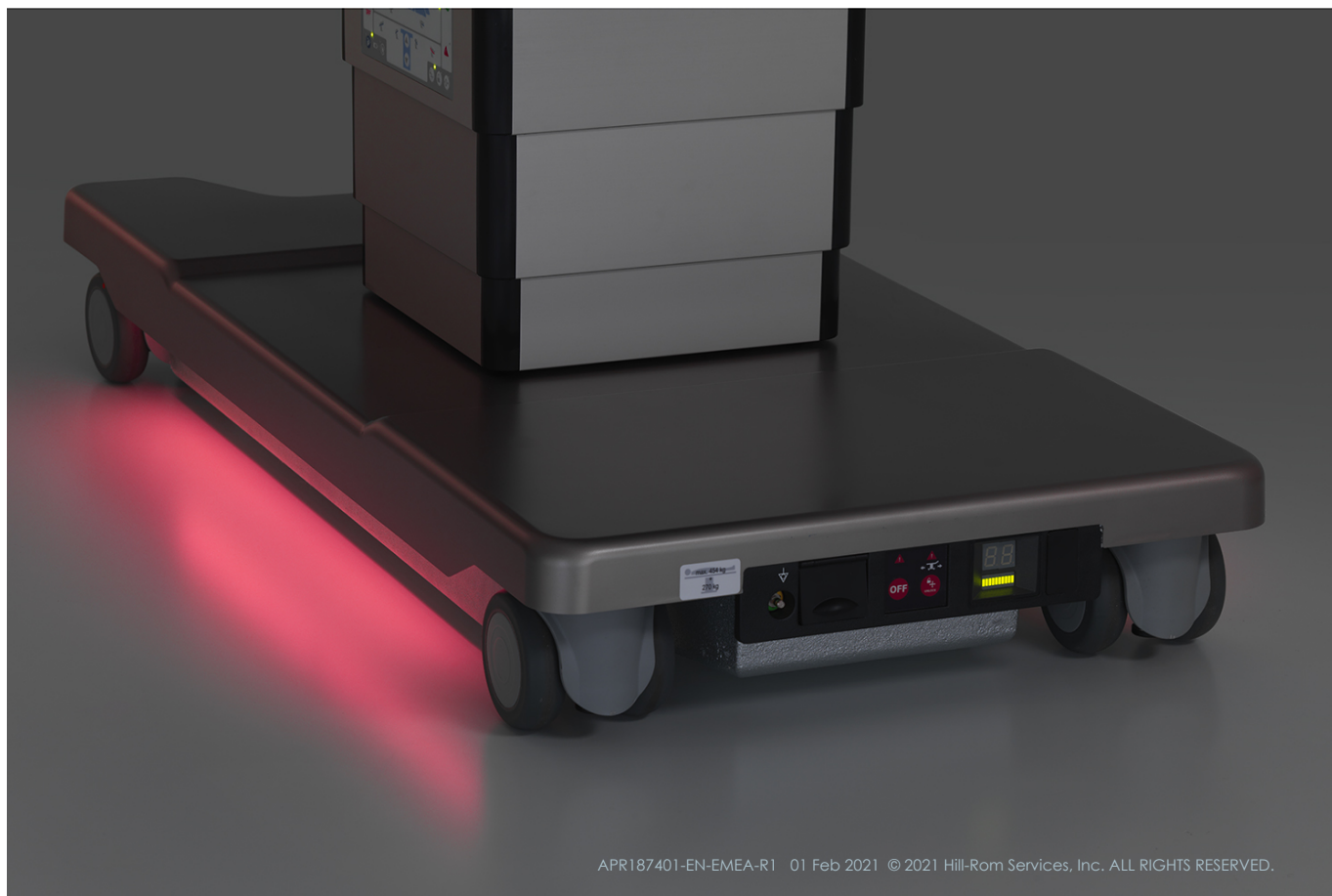
- Table Unlock Status



# Light Messaging System

## VISUAL TABLE STATUS FEEDBACK REDUCING ALARM FATIGUE

- Table Error Indication
- Low Battery Status



# Slim Column and Tabletop Slide

## 360° IMAGING ACCESS, REDUCING THE NEED FOR CHALLENGING WORKAROUNDS

- 40 cm of table top slide
- Carbon Fiber components
- New Cladding Design
- Quiet electro-hydraulic lift column



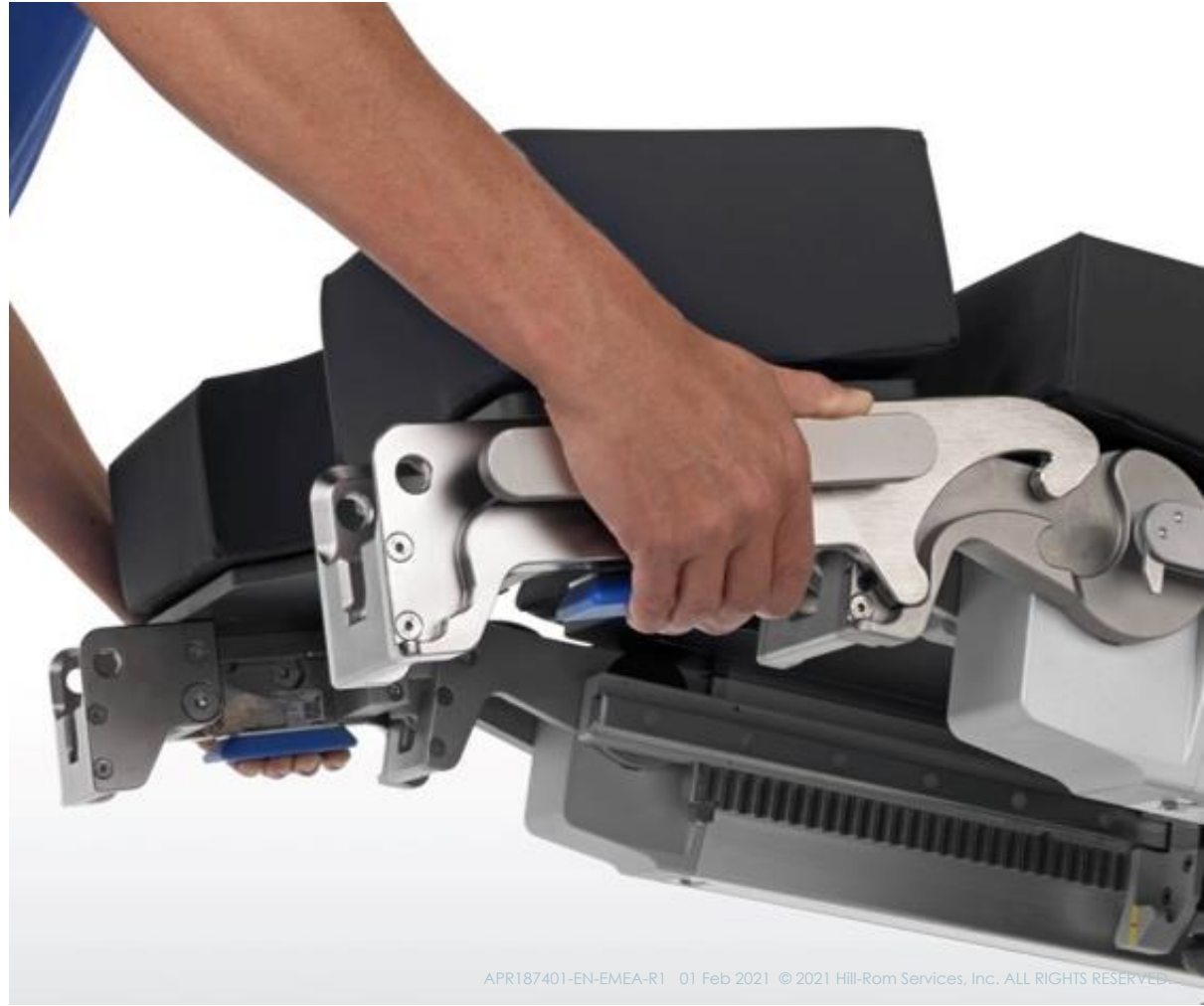


# Self-Aligning Hook Coupler System

## AUDIBLE AND VISUAL FEEDBACK PROVIDING A SECURE CONNECTION AND PEACE OF MIND




Works across our tabletop portfolio

- Shoulder Chair
- Carbon 1200
- Carbon 600
- Leg Section(s)
- Head Section (s)
- Universal section
- Pelvic extension
- Upper back section









# Optimizing Surgical Efficiency and Safety

## SURGICAL WORKFLOW

Exam Lights	Surgical Lights			Cameras	Booms
	Value	Universal	Premium		
					
<b>TruLight® 1000 Exam Light</b>	<b>TruLight® 3000 Surgical Light</b>	<b>TruLight® 5000 Surgical Light</b>	<b>iLED® 7 Surgical Light</b>	<b>TruVidia® Camera</b>	<b>TruPort® Boom</b>

## PRECISION POSITIONING

Mobile Tables		System Tables	Specialty Tables		
Universal	Premium		Robotic	Hybrid	Spine
					
<b>PST 500 Table</b>	<b>TruSystem® 7000 Table</b>	<b>TruSystem® 7500 Table</b>	<b>TruSystem® 7000dV Table</b>	<b>TS7500® Hybrid Table</b>	<b>Advance Table</b>
General, GYN/Uro, Ortho, C-Section, Arthroscopy, ERCP/LAP					
Bariatric, Vascular, Cardio, Neuro					
Trauma, Spine					
			Robotic	Hybrid Image Guided	Spine





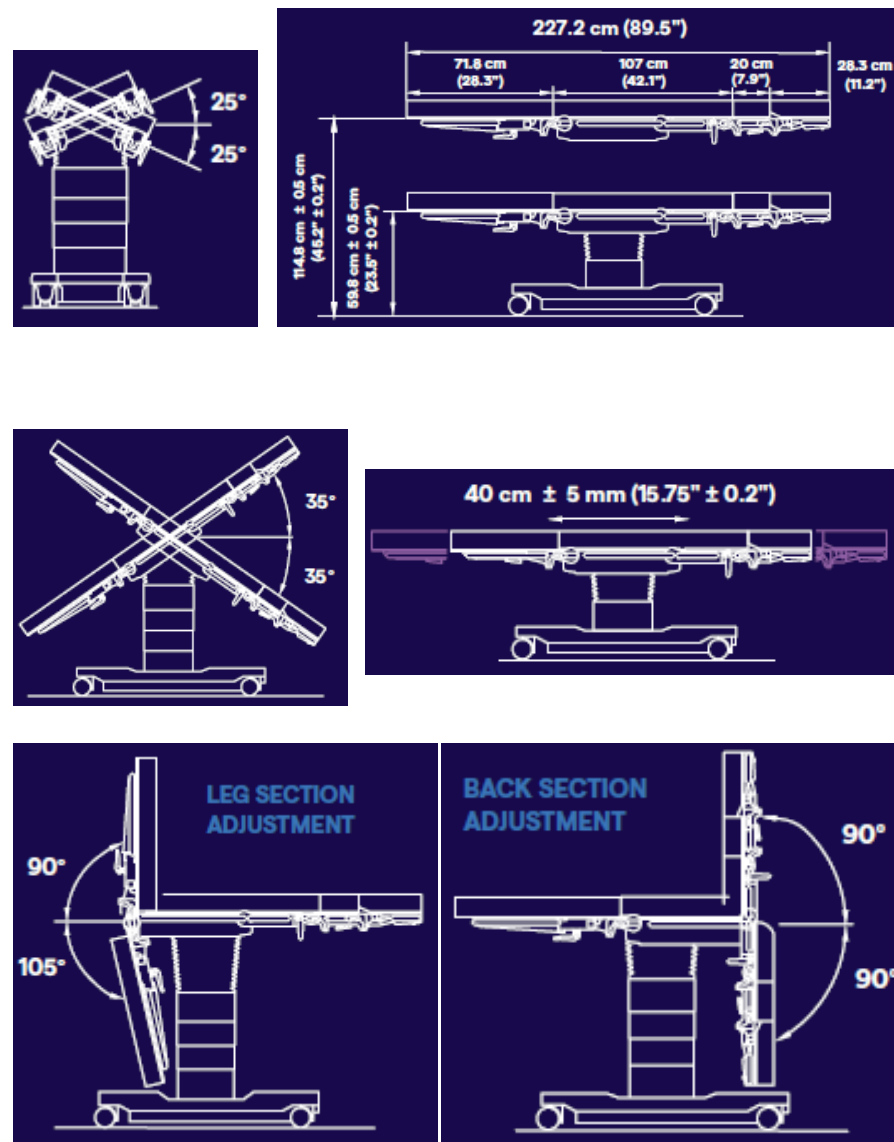
# Appendix

# Technical Details

## PRODUCT SPECIFICATIONS

<b>Length</b>	227.2 cm
<b>Net table weight</b>	250 kg
<b>Height adjustment</b>	59.8 cm - 114.8 cm $\pm$ 0.5 cm
<b>Trendelenburg / reverse Trendelenburg</b>	$\pm$ 35° ( $\pm$ 2°)
<b>Tilt</b>	$\pm$ 25° ( $\pm$ 2°)
<b>Longitudinal slide</b>	40 cm $\pm$ 0.5 cm head side: 20 cm foot side: 20 cm
<b>Adjustment Range - back section</b>	$\pm$ 90° ( $\pm$ 2°)
<b>Adjustment Range - leg section</b>	+ 90° / - 105°
<b>Zero positioning</b>	Simultaneous self-leveling of tabletop sections
<b>Maximum overall load</b>	454 kg*

\*Weight capacity may fluctuate based on table configuration. Refer the to IFU for additional information.



{Customer Name} and  
Hillrom - join our next step  
forward.

Questions?